

CONTACT INFORMATION

Municipal Manager Päivi Rahkonen
The municipality of Hollola
Virastotie 3, FIN-15870 Hollola, Finland
Tel +358 3 880 111
Fax +358 3 880 1474
paivi.rahkonen@hollola.fi



NOSTAVA

DRY PORT

NOSTAVA - DRY PORT

AN AREA OF THE FUTURE

The Nostava area, located in the vicinity of Lahti in Finland, is purposefully being developed into a modern dry port, to answer the needs of the future.

Financial co-operation between the European Union and Russia, as well as with China, is on the increase. The economic focal point of the Baltic Sea region is being affected for example by strong growth in the area of St Petersburg. This development naturally affects the logistics system. The impact has primarily been seen in the growth and development of the ports. In addition to road transport, railroad transport services are becoming increasingly competitive due to the development. A share of the goods processing and unit load traffic services are expected to be concentrated on dry ports.

A REGION OF DEVELOPING RAIL AND ROAD CONNECTIONS

The Nostava area occupies a central location in the road and rail network, from a Finnish as well as an international point of view. From an international perspective, Nostava lies in the centre of Northern Europe and offers Russia's growing markets a terminal area in the European Union with excellent connections to both Russia and the Far East through the Trans-Siberian railroad. For sea transport, Nostava is connected to several ports through its excellent road and rail connections (including ports of Helsinki, Kotka, Hamina, Loviisa, Hanko), and through these provides further connections to all significant ports of destination.



From the point of view of domestic transport, Nostava is located at a strategic truck traffic junction, right at the intersection of highways 4 and 12. Two million consumers can be reached from Nostava in just an hour and a half. This central location in the Finnish railroad network will further improve with the implementation of the Kerava-Lahti shortcut. The shortcut will speed up connections to Helsinki, helping to enable reliable and uninterrupted train transport.

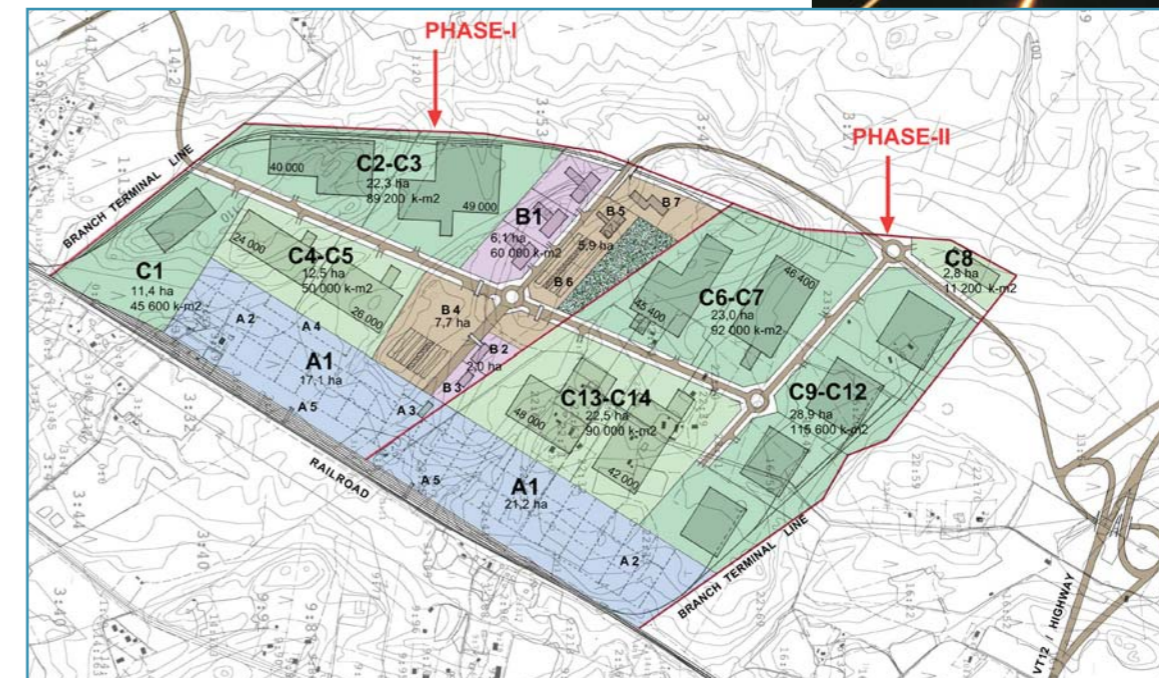


LOGISTICS AND PRODUCTION CENTRE

Companies located in Nostava's dry port, or companies utilising its services, can direct goods transported by sea, rail and road to one terminal. By utilising the Nostava dry port, companies may compare routes through different ports and acquire connections to several ports of destination. From Nostava it is possible to cater to the Finnish markets while also processing the flow of goods in the direction of Russia and Asia. The central location enables a balance between arriving and departing goods flow. Production needs will be taken into account in developing the area. These include, for example, the possibilities of the Nostava project to develop into a multi-faceted production and development centre in terms of environmental technology.

The location and scope of the Nostava area are ideal for creating a significant dry port, as the area can be expanded to up to 200 hectares. The aim is to begin construction before 2010. The regional plan of Nostava is ideal in terms of logistics efficiency. The location of Nostava and the possibility to develop the project without limiting structures has created pre-conditions for the Nostava project to develop into a logistics centre for rail and road traffic that will sufficiently correspond to future needs.

The area will be built in two phases. The overall area for the production, terminal and office buildings will be between 400,000 m² to 550,000 m² in size, depending on the needs of the occupants. The initial regional plan is presented in the attached picture.



- A1 Container terminal
- A2 Depot
- A3 Maintenance
- A4 Reefer containers
- A5 Gantries

- B1 Business Park / 60,000 k-m²
- B2 Offices and main gate
- B3 Customs
- B4 Parking, 80 trucks
- B5 Truck terminal
- B6 Parking, 70 trucks
- B7 Park

- C1-C6 Logistics and high tech area, I phase / 196,000 k-m²
- C7-C15 Logistics and high tech area, II phase / 308,600 k-m²

